

Port Elizabeth, Summerstrand, South Campus

Contact Details:

Head of Department, Department of Architecture

Dr Jean-Pierre Basson

Room 214, Building 8, South Campus

Tel. +27 (0)41 504 2719 (secretary), Tel. +27 (0)41 504 2244 (direct line)

jpbaseon@mandela.ac.za

Bachelor of Architectural Studies 2027

Welcome to the exciting world of architectural studies!

If you are currently exploring architecture as a possible career path and are **beginning the application process**, we encourage you to **start from the beginning of this guide**. It will take you step-by-step through the requirements and application process for the Bachelor of Architectural Studies.

If you have already **submitted your application** and have been invited to prepare your portfolio, please **proceed directly to Page 2**, where the portfolio requirements and preparation guidelines are explained in detail.

We look forward to guiding you on this rewarding academic journey into the built environment.

Understand the Admission Requirements

Before you dive into this inspiring field, it's essential to ensure you meet the admission requirements:

- **Minimum NSC Statutory Requirements:** You must fulfil the minimum National Senior Certificate (NSC) statutory requirements for degree entry.
- **Mathematics Proficiency:** If you've tackled NSC Grade 12 Mathematics, you'll need a minimum Applicant Score of 370. Additionally, you should have achieved a Mathematics achievement rating of at least 55%.
- **Departmental Selection:** Keep in mind that admission is subject to departmental selection. While meeting the basic requirements is crucial, your passion for architecture and dedication to this field may also play a significant role in the selection process.

Begin the Application Process

When it's time to apply, follow these steps:

- **Visit the University Website:** Head to the university's website and navigate to the admissions section. Here, you'll find the online application portal.
- **Complete the Application:** Fill out the online application form, providing all the required information and documents.
- **Submit Your Application:** Once your application is complete, submit it through the university's online portal.



Departmental Selection Portfolio Submission Process

After you have submitted your online application, the Admissions Department will process your application. This process normally takes approximately 21 working days. Once your application has been reviewed, you will be contacted by the Admissions Office with further instructions regarding the portfolio submission. At this stage, you will be formally invited to prepare and submit your portfolio for departmental selection. Please monitor your email regularly for communication from the Admissions Office.

The section below explains the required content and format of the portfolio.

Step 1: Book Your Submission Date

Use the link below to **book** your preferred portfolio submission date.

The table below shows all available submission dates. Please choose one date only.

Session	Date	Session	Date
1	3 July 2026	3	2 October 2026
2	21 August 2026	4	27 November 2026

Step 2: Prepare Your Portfolio

With your submission slot secured, it's time to focus on creating a standout portfolio that reflects your passion and creativity in architecture. Here are some pointers before we look at the requirements:

- **Portfolio Creation:** Prepare a portfolio that highlights your interest in architecture. Include sketches, design projects, or any creative work demonstrating your enthusiasm for the field.
- **Organisation:** Organise your portfolio neatly and thoughtfully. Arrange your work in a way that tells a story about your artistic journey and showcases your skills and unique perspective.
- **Attention to Detail:** Pay close attention to the details in your portfolio. Ensure that your work is presented in a visually appealing and professional manner.
- **Reflect Your Passion:** Your portfolio reflects your passion for architecture. Be sure to include pieces that not only display your technical abilities but also convey your dedication to this exciting discipline.

Portfolio Requirements

Your creative portfolio must include all of the exercises mentioned below. Additionally, applicants are encouraged to include any other creative work that they believe will enhance and strengthen their application. **Please compile your portfolio in PowerPoint format. You may scan your drawings or take clear photographs of your work and place these images into your PowerPoint presentation to create your portfolio.**

1. Drawing Exercises

Architectural Sketches: Create a freehand sketch of prominent architectural landmarks in your local area, emphasising line quality and attention to detail.

Tonal Drawings: Produce tonal drawings of a well-known architectural structure, highlighting light and shadow to convey form and depth.

Perspective Drawing: Demonstrate your understanding of perspective by sketching a room or interior space, capturing accurate spatial relationships.

2. Mapping Exercise



"Illustrate Your Journey: Where Will It Take You?: Picture this – you're given a blank canvas, and your task is to fill it with a combination of illustrations and words. Your goal? To illustrate the fascinating journey between two places. The best part? The journey is entirely up to you! This isn't your average art project. It's a chance for you to let your creativity run wild. Will you take us on a whimsical trip through a magical forest, an underwater wonderland, or a futuristic cityscape? The possibilities are endless, and the choice is yours!

We're looking for originality, perception, and, most of all, your unique perspective. Your journey can be as fantastical or as down-to-earth as you like. It's all about how you see the world and how you choose to share it with others.

3. Creative Exercise

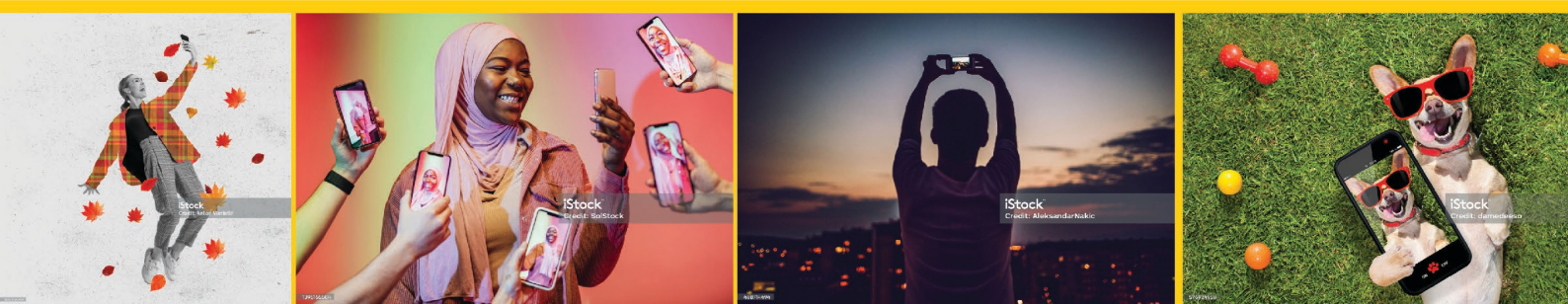
Alright future architects, it's your turn to step in front of the camera! As part of your portfolio, you must submit a short video (maximum 2 minutes) telling us who you are and why you want to study architecture. Think of it as your personal introduction to the world of architecture — and to us.

We want to hear your story. What sparked your interest in architecture? What inspires you? What kinds of spaces excite you? Most importantly, why do you see yourself becoming an architect?

There are no strict rules on how you record it. Use your phone, do a quick PowerPoint screen recording, show us sketches, spaces you love, or anything that helps tell your story. Keep it simple or get creative — just make sure it feels like you.

This isn't about professional filming, fancy editing, or perfect lighting. It's about personality, passion, curiosity, and giving us a glimpse of the person behind the portfolio.

So relax, have fun with it, and let your enthusiasm for architecture come through. We're excited to meet you. Embed the video on your PowerPoint presentation.



4. Problem-solving Exercise

Project Title: Metamorphosis: Transforming Waste into Art

The theme for the sustainable sculpture project is "Metamorphosis." Applicants are tasked with creating a sculpture that symbolises transformation, rebirth, and the potential beauty that can emerge from waste materials. Applicants are challenged to design a sculpture that captures the essence of transformation using **recycled materials**. The sculpture should reflect the journey from discarded waste to a piece of art, highlighting the potential for positive change in our approach to the environment.

- How can the chosen recycled materials be transformed into a visually appealing and meaningful sculpture?
- What symbols or elements can represent the concept of metamorphosis in the design?
- How does the sculpture engage with the theme of sustainability and environmental consciousness?

Restrictions: Minimum dimensions: 300mm x 300mm x 300mm, and maximum dimensions: 600mm x 600mm x 600mm.

Provide your design ideas through concept sketches or diagrams and include relevant keywords for planning. Additionally, submit a photograph of the completed sculpture.

Step 3: Submit your Portfolio



The submission and format of the portfolio:

- **Portfolio Format:** You can choose any format and size that best represents your work
- **Submission Format:** When submitting your portfolio, it should be compiled into a **single, well-organised PowerPoint** document. The PPT should include a cover page, an index, and a logical presentation of your work. Label your File with you **Surname Name**
- **Submission Deadline:** Your completed portfolio in PPT format should be emailed to Dr Basson by the deadline specified in **Step 1** of the application process.

When you are ready, submit your portfolio using the **submission link** next to your selected date in the table provided.

You may submit your portfolio before your selected submission date if you are ready. However, all portfolios must be submitted no later than **9:00 AM** on your chosen submission date.

Session	Date	
1	3 July 2026	
2	21 August 2026	
3	2 October 2026	
4	27 November 2026	

Portfolio Review and Outcomes

After submitting your portfolio, the panel will thoroughly review it. Based on this evaluation, you will receive one of the following three outcomes within 7 to 10 working days:

- **Unsuccessful:** If the panel determines that the portfolio does not meet the required criteria, you will be notified that your application was unsuccessful based on the portfolio submitted.
- **Successful:** If the panel finds that your portfolio meets the necessary standards, you will be notified that your application was successful based on the portfolio received.

Should you have any questions or require further information regarding the admission requirements, application process or the Bachelor of Architectural Studies programme, please do not hesitate to contact Dr Basson.

Would you like to come and visit the Department for a tour of our facility? You are more than welcome to email Dr Basson to make the necessary arrangements.

We are excited to receive your application and learn more about your passion for architecture and our aspirations in the field. Thank you for considering Nelson Mandela University for your undergraduate studies, and we look forward to the possibility of welcoming you into our Bachelor of Architectural Studies programme.

Best regards



Dr Jean-Pierre Basson *PhD, MSc (Construction Management), M.Arch (Prof), BAS, PrArch, LTCL, ATCL*
Head of Department: Department of Architecture

Senior Lecturer: Department of Architecture
Department of Architecture Admission Coordinator, First-year Studio Coordinator
School of Architecture
Room 311, 2nd Floor, Building 8, South Campus
PO Box 77000, Nelson Mandela University, PORT ELIZABETH, 6031
Tel No. +27 +41 504 2244

Portfolio assessment rubric

